

## GlobalSCAPE® Managed Information Xchange™ (MIX)

*Reduce costs and increase efficiencies with a managed solution from two recognized market leaders.*

GlobalSCAPE® Managed Information Xchange™ enables your organization to securely exchange business-to-business data, including large files and sensitive data. This hosted managed file transfer (MFT) service integrates GlobalSCAPE's market-leading Enhanced File Transfer Server™ (EFT Server) solution with proven infrastructure from Rackspace® Hosting (NYSE: RAX), the world's leader in the hosting and cloud computing industry.



This tiered service allows you to outsource all or part of your complex and demanding information exchange needs, in order to reduce costs, increase efficiencies, track and audit transactions, and provide a greater level of security and compliance. We offer solution tiers ranging from trial and proof-of-concept implementations to enterprise-scale managed services.

GlobalSCAPE Managed Information Xchange benefits small, medium, and large enterprises seeking an alternative to on-premises MFT implementations. These services complement our other on-premise solutions and provide compelling value by delivering our industry-leading MFT capabilities through a secure and scalable cloud-based infrastructure.

### Key Benefits

Key benefits and features of the offering include:

- **"Pay as you go"** flexible pricing options that eliminate upfront capital expenditures.
- **Reduced ongoing maintenance expenses** including hardware, software, personnel, utility services, and backup costs.
- **Improved IT infrastructure reliability and performance** enabled by the Rackspace global infrastructure.
- **Rapid deployment** with scalable processing and storage capabilities.
- **Market-leading features and security capabilities** from GlobalSCAPE's EFT Server solution adopted by thousands of customers worldwide.
- **Reliable and timely support** from GlobalSCAPE's Managed Information Xchange support team.



## Features and Security Capabilities

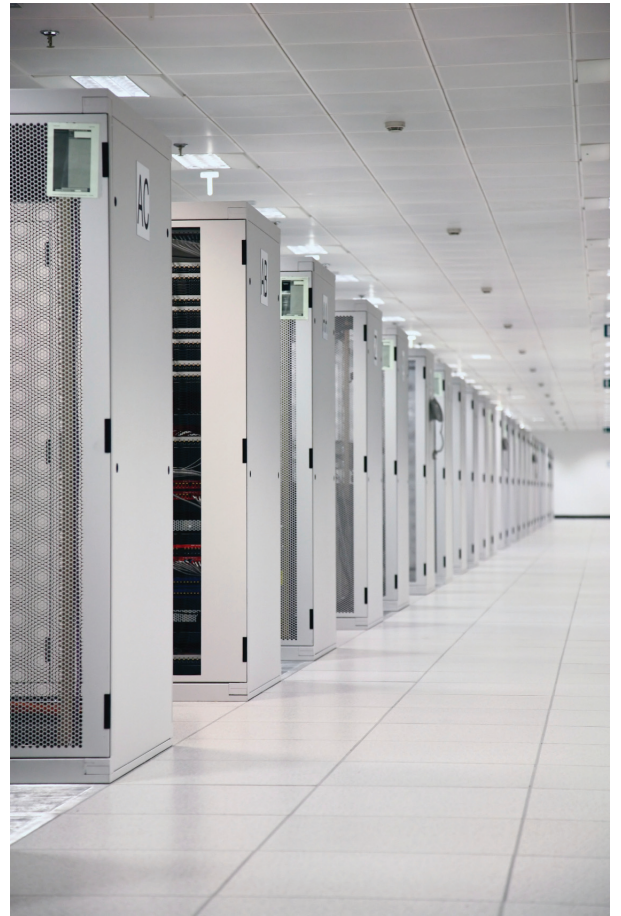
GlobalSCAPE Managed Information Xchange offers the following information security mechanisms in addition to the standard features of our Enhanced File Transfer (EFT) Server:

- 24 x 7 intrusion detection and response services provided by Alert Logic
- Full time active port monitoring
- Automated server patching
- High availability with redundant failover capabilities
- 24 x 7 managed anti-virus powered by Sophos
- On-demand and automated vulnerability scanning
- GLBA, HIPAA, PCI DSS, and SOX compliance reporting
- Fully managed firewall infrastructure
- SAS-70 Type 2 environment
- Automatic data backup

### EFT Server Security Features

EFT Server includes the following features:

- Extensive options for secure transport protocols
- User-friendly interfaces for sending and receiving files
- Data encryption and security, including FIPS 140-2 and PGP
- Built-in PCI DSS and FIPS compliance to enforce best practices
- Industry-leading authentication and user account controls
- Event-based automation and processing
- Robust ability to audit, report, and monitor all activity
- Training and customization available through GlobalSCAPE Professional Services



*Photo from istockphoto.com*

## GlobalSCAPE Managed Information Xchange Tiers

We offer flexible solution tiers ranging from trial and proof-of-concept implementations to enterprise-scale managed services.

Feature Set	Economy (Tier 1)	Standard (Tier 2)	Enterprise (Tier 3)
FTP/FTPS	✓	✓	✓
HTTP/HTTPS	✓	✓	✓
SFTP	✓	✓	✓
High Security Module (HSM)*	✓	✓	✓
Auditing and Reporting Module (ARM)*	-	✓	✓
Web Transfer Client (WTC)*	-	✓	✓
Secure Ad Hoc Transfer (SAT)*	-	✓	✓
PGP Support	-	-	✓
Advanced Workflow Engine (AWE)*	-	-	✓
AS2 Transport Capability	-	Optional	Optional
Monthly Bandwidth	25GB	75GB	200GB
File Storage	25GB	75GB	200GB
Auditing DB Storage	-	5GB	5GB
File Storage Redundancy	✓	✓	✓
File Storage Backup	✓	✓	✓
Server Failover/Redundancy	✓	✓	✓
24x7 Support	✓	✓	✓
Self-Signed SSL Certificate	✓	✓	✓

\* Refer to [globalscape.com](http://globalscape.com) for details of the AWE, HSM, ARM, SAT, and WTC modules

### Optional offerings:

- VPN connectivity to data repository
- Scalable storage space
- Scalable bandwidth
- Development/test instances available
- Alternative authentication source setup (Req. VPN)
- AS2 transport capability
- Additional IP addresses
- Professional Services

***Interested in seeing a live demo?***

***Please contact us to learn more about how we can help with your business needs.***



4500 Lockhill-Selma Road, Suite 150; San Antonio TX 78249  
 1-800-290-5054 (USA & Canada); 1-210-308-8267 (Worldwide)  
 For more information about GlobalSCAPE, visit [globalscape.com](http://globalscape.com).